



Conceptual model

iHub4Schools

April 2023





Introduction of the Conceptual model



AIMS

The aim of the conceptual model is to clarify the focus and principles of the school mentoring model, the various elements and their mutual connections.



DESCRIPTION

The conceptual model defines the main components of digitally innovative schools fostering whole-school level adoption of innovation.

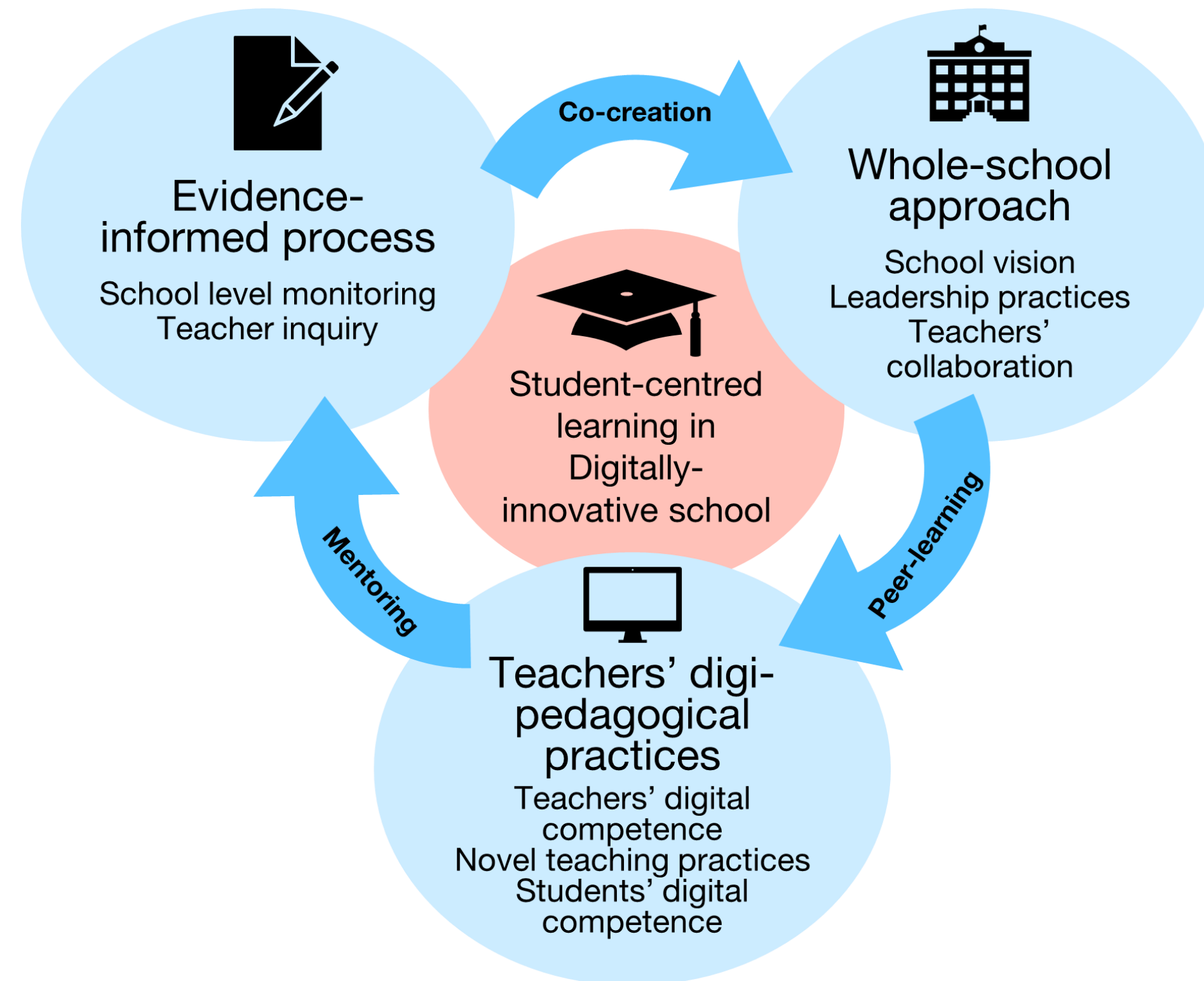


BACKGROUND

The conceptual model is based on two previous models: the Innovative digital school model (Ilomäki & Lakkala, 2018) and Schools' Digital Maturity framework (Pata, Tammets, Väljataga et al., 2021)



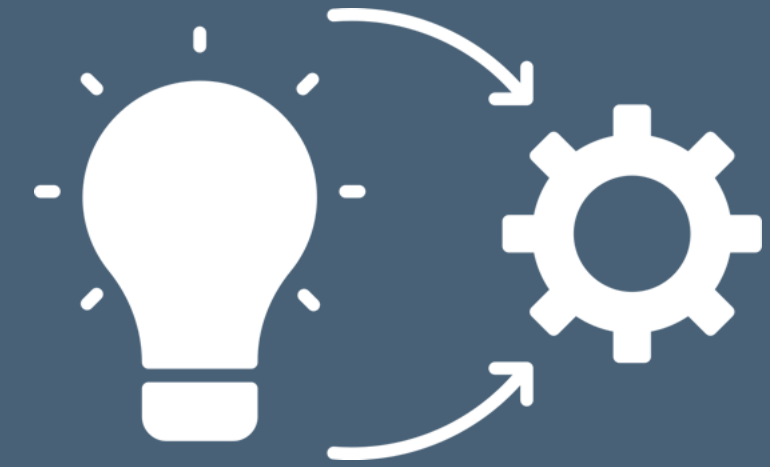
Structure





Recommendations

Examples and additional information



Click to find additional information:

- Ilomäki, L., & Lakkala, M. (2018). Digital technology and practices for school improvement: Innovative digital school model. *Research and practice in technology enhanced learning*, 13(25). <https://doi.org/10.1186/s41039-018-0094-8>
- Pata, K., Tammets, K., Väljataga, T. et al. (2021). The patterns of school improvement in digitally innovative schools. *Technology, Knowledge and Learning*. <https://doi.org/10.1007/s10758-021-09514-5>

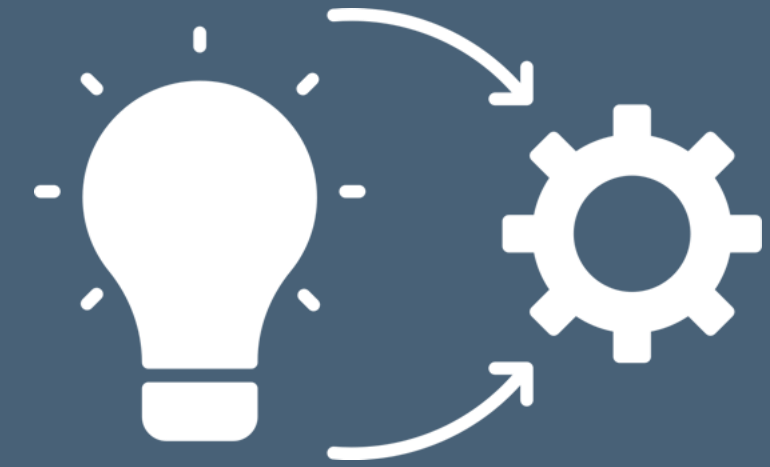


ihub4schools.eu/



Recommendations

Examples and additional information



Click to find examples and additional information:

- Tammets, K., Ilomäki, L., & Lakkala, M. (2021). *D3.1 Initial mentoring model. Report M6.* iHub4Schools project.



- Support material for using various methods during the process in separate presentations on: <https://www.ihub4schools.eu/mentoring-model/>
- Presentation of the iHub4Schools Mentoring Model.



[ihub4schools.eu/](https://www.ihub4schools.eu/)



This material is part of the **School mentoring model**



The aim of the model is to foster the adoption of digital innovation at school level.

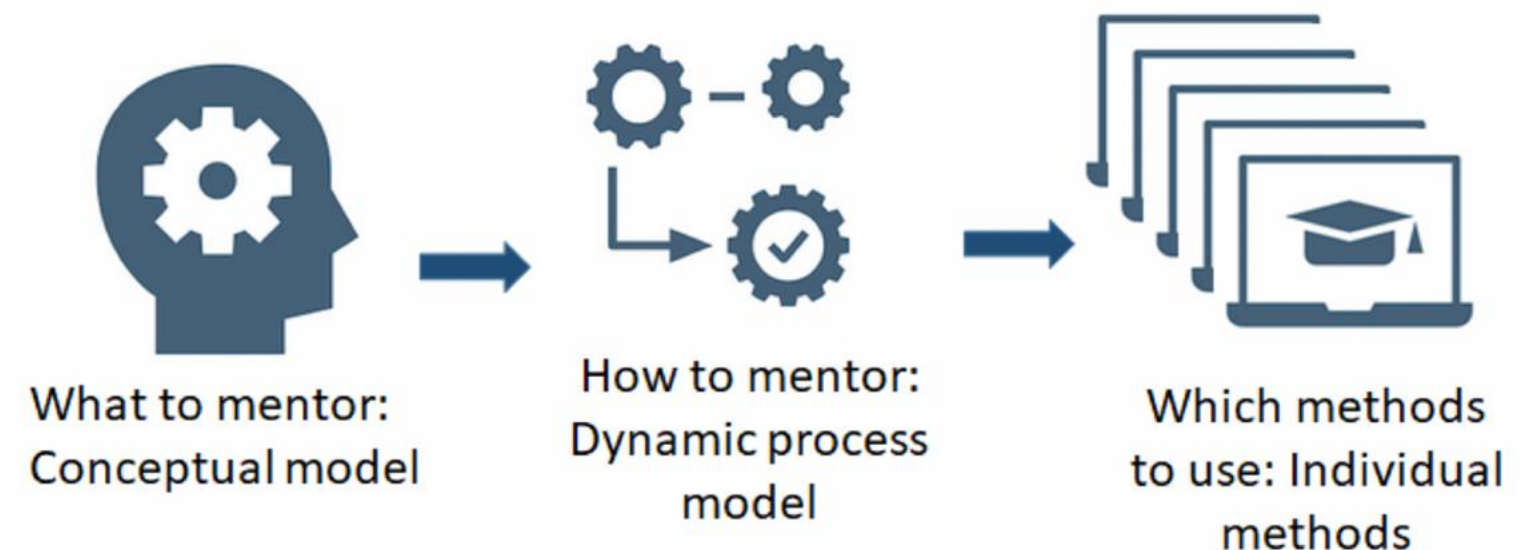
The focus is on teachers' understanding of digital technology and practices to implement technology in a pedagogically meaningful way.

The model promotes teachers' professional learning with peers and school management to create the culture and practices for evidence-informed implementation of digital innovation.

The model is created in the **iHub4Schools project** (2021-2023). More information of the model:

<https://www.ihub4schools.eu/mentoring-model/>

School mentoring model





[@IHub4schools](https://twitter.com/IHub4schools)



[@iHub4schools](https://www.facebook.com/IHub4schools)



ihub4schools.eu/



Tallinn University



University of Helsinki



Vilnius University



UNIVERSITY OF BERGEN

University of Bergen



STePS



University College
London



École polytechnique
fédérale de Lausanne



HARIDUS- JA NOORTEAMET

Estonian Education
and Youth Board



Batumi Shota Rustaveli
State University



This project has received funding from the European Union's Horizon 2020 research and innovation programme

